

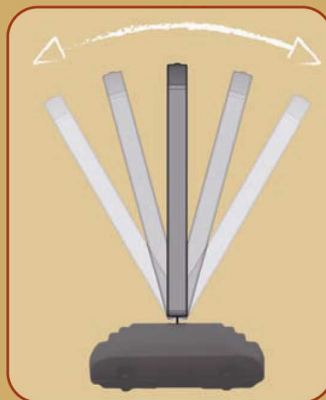
Wind Sign Deluxe™

- Resists head-on winds up to 50 mph
- Change signs in seconds
 - "Quick-Change"™ feature, signs easily slide in and out
 - use Coroplast™ signs or other material 3/16" or less
- All plastic frame
 - eliminates torn, bent, or rusted frames
- "Stay Tabs"™ assure sign stays securely in place
- Plastic base has two built-in wheels
 - can be filled with dry sand
- Tool free assembly

**New
Size**

**QUICK
CHANGE™**

5' 1" Tall



Heavy-duty coil springs
resist strong winds and
return the sign to an
upright position



Patented slot design
- just slide in a sign



"Stay Tabs"™ keep sign
securely in place

Wind Sign Deluxe™

OVERALL DIMENSIONS : 61"H X 30" W

FRAME DIMENSIONS: 51"H X 30"W x 2.5"D

BASE DIMENSIONS: 7.1"H X 28.7"W X 18.1"D

DIMENSIONS OF RECESSED SIGN AREA: 43.25"H x 28.5"W

TOTAL WEIGHT: 30 lbs.

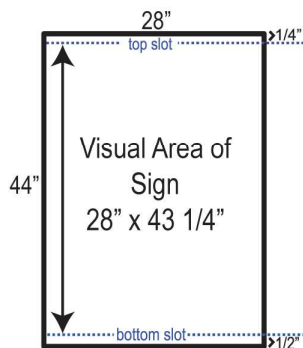
WEIGHT OF BASE: 9 lbs.

COLOR: GRAY

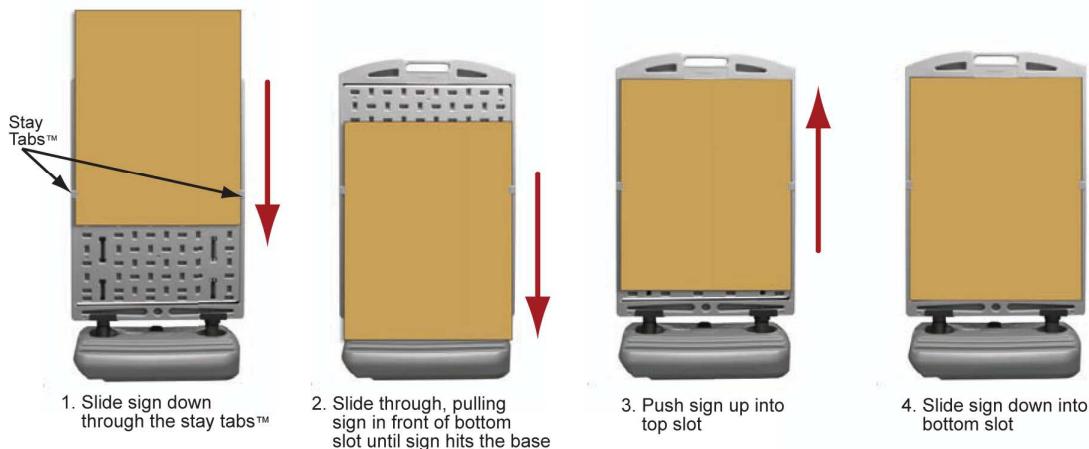
SIGN SUBSTRATE WEIGHT LIMIT: Maximum of 5 lbs. per side

2 SIGNS PER FRAME

Holds Signs
28"W x 44"H
(up to 3/16" thick)



Sign Insertion Instructions:



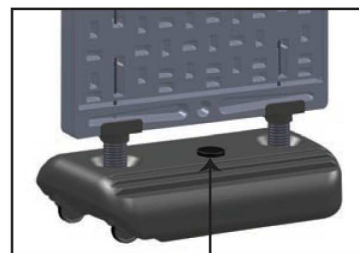
Slide in a
Message
Board



Sand Ballasting Instructions

Unscrew cap from fill hole and fill with up to 115 lbs. of sand to achieve desired wind resistance. Sand should be level inside of base to maintain optimum balance. Shake gently to level sand.

Pounds of Ballast	Head-on Wind Resistance
70 lbs	40 mph
100 lbs	45 mph
115 lbs	50 mph



Sand Fill Hole

MADE IN THE USA

US PATENT 7,337,569
Other Patents
Pending



HDPE

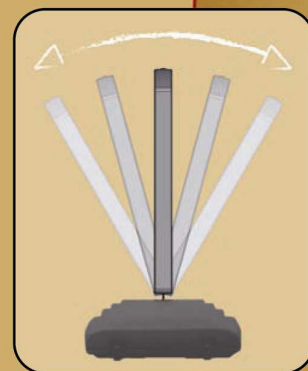
Stop-Painting.com

1-866-284-1541

WindSigns

Available in 3 Sizes

- Resists head-on winds up to 60 mph*
*wind resistance varies for each size frame, see reverse side for details
- Change signs in seconds
 - "Quick-Change"™ feature, signs easily slide in and out
 - use Coroplast™ signs or other material 3/16" thick or less
- All plastic frame
 - eliminates torn, bent, or rusted frames
- Plastic base has two built-in wheels
 - can be filled with dry sand
- Tool free assembly



Coil springs resist strong winds and return the sign to an upright position



Wind Sign Deluxe™
signs 28" x 44"

Wind Sign II
signs 24" x 36"

Wind Sign
signs 22" x 28"



Patented slot design
- just slide in a sign

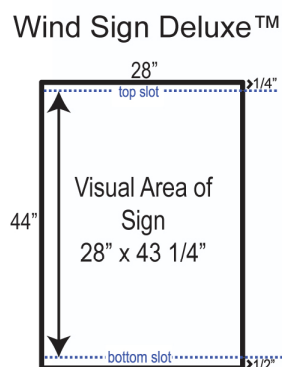
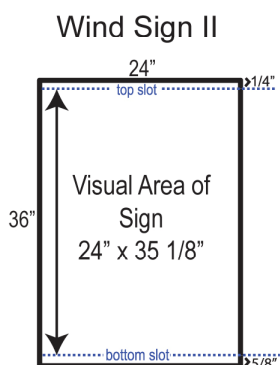
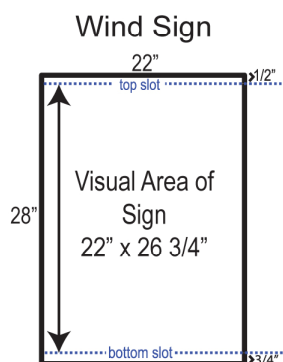


"Stay Tabs"™ keep sign securely in place
(On Wind Sign Deluxe and Wind Sign II)

WindSigns

Available in 3 Sizes

Specifications	Wind Sign - Not Avail.	Wind Sign II	Wind Sign Deluxe™
Color	Gray	Gray	Gray
Dimensions (Frame Only)	32.75"H x 24"W x 2.5"D	42.9"H x 26"W x 2.5"D	51"H x 30"W x 2.5"D
Dimensions (Base Only)	4.5"H x 26"W x 18"D	7.1"H x 28.7"W x 18.1" D	7.1"H x 28.7"W x 18.1" D
Dimensions Assembled	40"H x 26"W	53"H x 28.7"W	61"H x 30"W
Total Weight Assembled	16 lbs.	25 lbs.	30 lbs.
Weight (Base Only)	4.3 lbs.	9 lbs.	9 lbs.
Base Sand Ballasting	Use a max. of 85 lbs. of dry sand	Use a max. of 115 lbs. of dry sand	Use a max. of 115 lbs. of dry sand
Sign Insert Size	22" x 28" (3/16" thick)	24" x 36" (3/16" thick)	28" x 44" (3/16" thick)
Sign Insert Weight Limit	Max. of 2.5 lbs. per side	Max. of 5 lbs. per side	Max. of 5 lbs. per side



Sand Ballasting Instructions For Wind Sign Deluxe and Wind Sign II

Unscrew cap from fill hole and fill with up to 115 lbs. of dry sand to achieve desired wind resistance. Sand should be level inside of base to maintain optimum balance. Shake gently to level sand.

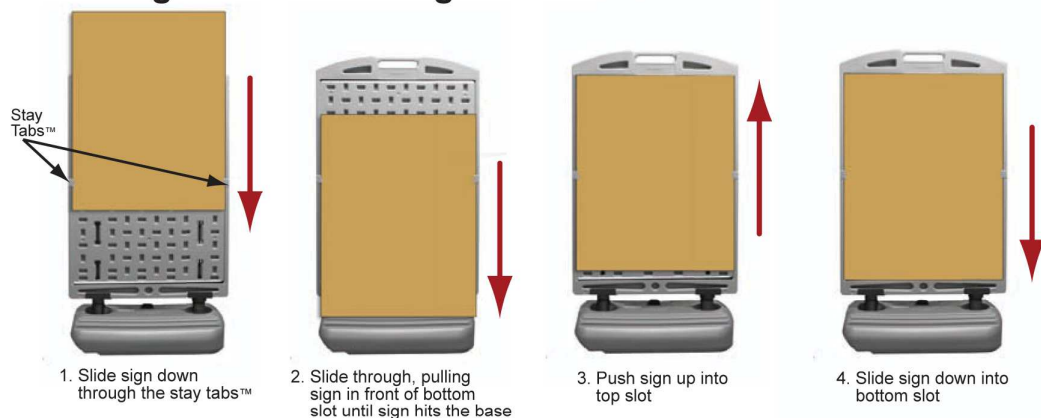
Pounds of Ballast	Head-on Wind Resistance
70 lbs	40 mph
100 lbs	45 mph
115 lbs	50 mph

Pounds of Ballast	Head-on Wind Resistance
70 lbs	40 mph
100 lbs	55 mph
115 lbs	60 mph



Sand Fill Hole

Sign Insertion Instructions For Wind Sign II and Wind Sign Deluxe™:



Slide in a
Message
Board...

Available for Wind Sign,
Wind Sign II, and
Wind Sign Deluxe™



or a Marker
Board

Available for Wind Sign
and Wind Sign II



HDPE

MADE IN THE USA

US PATENT 7,337,569
Other Patents
Pending

Stop-Painting.com
1-866-284-1541