

DELINEATOR POST

EZ Grab StaySafe Delineator Post is made from 100% impact-resistant, linear low density polyethylene material. Its EZ Grab handle provides portability and ease of movement. UV inhibitors resist fading. Each post comes with two 3" high intensity reflective bands. Bands are recessed inside post for protection. Post is NCHRP-350 Certified and the base is 100% recycled rubber and is extremely durable.



EZ GRAB STAYSAFE WIDE BODY DELINEATOR

HI-INTENSITY
4" and 6"
FLUORESCENT PRISMATIC

44.12" TALL

13" DIA. - Top Tier
16.5" DIA. - Bottom Shoulder

Meets NCHRP-350
crash test requirements.



EZ GRAB STAYSAFE TRIM LINE CHANNELIZER

42" TALL

HI-INTENSITY 4" and 6"
FLUORESCENT PRISMATIC

LOW DENSITY POLYETHYLENE
MATERIAL

DURABLE IMPACT RESISTANT

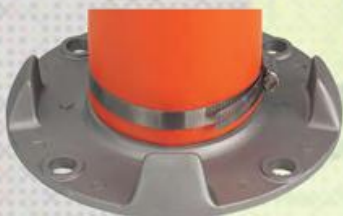
PATENTED
REINFORCED EZ-GRIP HANDLE

Meets MUTCD standards
NCHRP-350 Certified



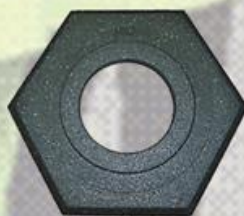
DELINEATOR BASES

StaySafe Aluminum Base for EZ-Grab Delineator



NCHRP-350 Certified
Accept weighted bases

StaySafe Trim Line Channelizer Rubber Base



Meets standards
NCHRP-350, MUTCD.
Available Weights:

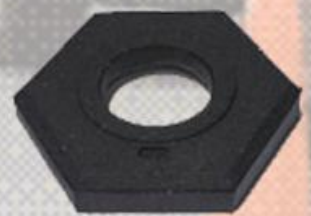
- 16 lbs.
- 25 lbs.
- 30 lbs.

StaySafe Wide Body Delineator Base



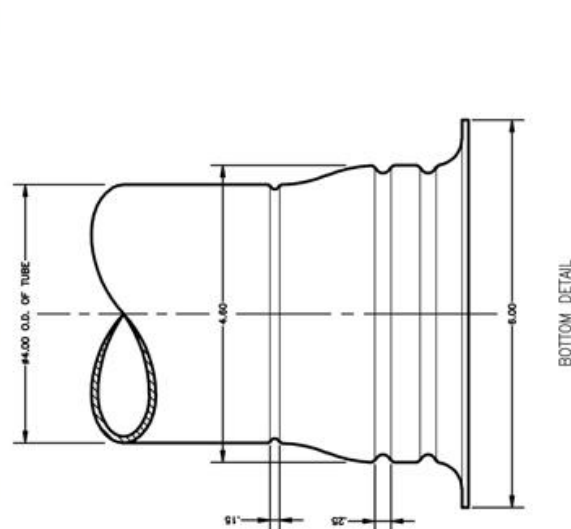
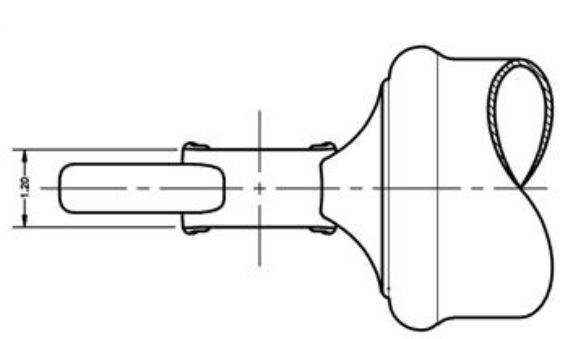
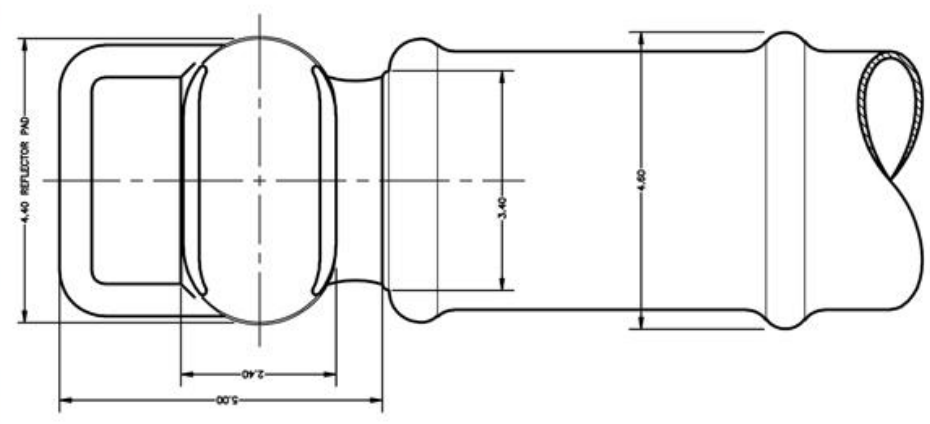
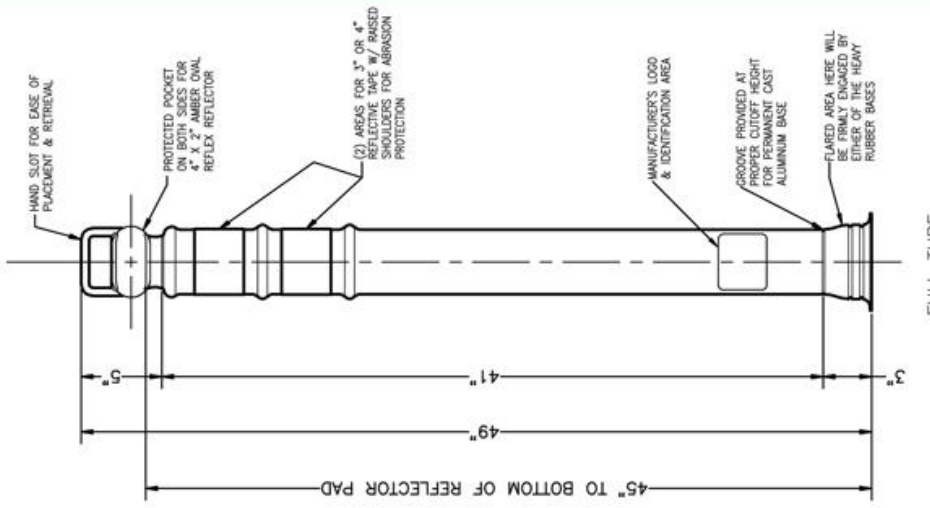
Meets standards
NCHRP-350, Category I.
2" height
24" outside diameter

StaySafe Delineator Rubber Base



Meets standards
NCHRP-350, MUTCD.
Available in:

- 10 lbs.
- 15 lbs.



HAND SLOT FOR EASE OF PLACEMENT & RETRIEVAL

PROTECTED POCKET ON BOTH SIZES FOR 4" X 2" AMBER OVAL REFLEX REFLECTOR

(2) AREAS FOR 3" OR 4" REFLECTIVE TAPE W/ BASED SHOULDERS FOR ABRASION PROTECTION

MANUFACTURER'S LOGO & IDENTIFICATION AREA

GROOVE PROVIDED AT PROPER CUTOFF HEIGHT FOR PERMANENT CAST ALUMINUM BASE

FLARED AREA HERE WILL BE TIGHTLY ENGAGED BY EITHER OF THE HEAVY RUBBER BASES

45" TO BOTTOM OF REFLECTOR PAD

41"

4"

49"

5"

FULL TUBE SCALE 1 = 8

FRONT VIEW TOP DETAIL

SIDE VIEW TOP DETAIL

BOTTOM DETAIL

- DESCRIPTION**
- EASY GRAB DELINEATOR POST, FLARED, 45" W/ (2) 3" H.I. COLLARS
 - EASY GRAB DELINEATOR POST, FLARED, 45" W/ (2) 3" H.I. COLLARS, W/ 10 LB BASE
 - DELINEATOR POST, STRAIGHT, W/ (2) 3" REFLECTIVE BANDS, USED W/ PERMANENT BASE
 - EASY GRAB DELINEATOR POST, FLARED, 45" W/ (2) 3" H.I. COLLARS & (2) OVAL REFLECTORS
 - EASY GRAB DELINEATOR POST, FLARED, 45" W/ (2) STROBES
 - EASY GRAB DELINEATOR POST, FLARED, 45" W/ (2) 3" H.I. COLLARS & (2) STROBES
 - EASY GRAB DELINEATOR POST, FLARED, 45" W/ (2) 3" H.I. COLLARS & (2) STROBES
 - DELINEATOR POST, STRAIGHT, W/ (2) 3" REFLECTIVE BANDS, INCLUDES PERMANENT ALUMINUM BASE
 - DELINEATOR POST, STRAIGHT, W/ (2) 4" REFLECTIVE BANDS, INCLUDES PERMANENT ALUMINUM BASE
 - EASY GRAB DELINEATOR POST, FLARED, 45" W/ (2) 3" H.I. COLLARS, BLUE
 - EASY GRAB DELINEATOR POST, FLARED, 45" W/ (2) 3" H.I. COLLARS, FOREST GREEN
 - EASY GRAB DELINEATOR POST, FLARED, 45" W/ (2) 3" H.I. COLLARS, WHITE
 - EASY GRAB DELINEATOR POST, FLARED, 45" W/ (2) 3" H.I. COLLARS, YELLOW

Stop-Painting.com

1-866-284-1541
3650 Rogers Road #208
Wake Forest, NC 27887

EZ GRAB HIGHWAY DELINEATOR POST
W/ OPTIONAL OVAL REFLECTORS OR STROBE LIGHTS,
H.I. COLLARS, REFLEX BANDS AND CHOICE OF BASES

SCALE AT B SIZE 1 = 2 DRAWING NUMBER
DRAFTER JIL DATE 3-20-2003
CHECKER SPG DATE 3-20-2003

REVISION
03-737
B

REV	REF	DESCRIPTION	DATE
B	----	ADDED P/N'S FOR MORE COMBO'S OF REFLECTORS, COLLARS, STROBES, BASES, & COLORS	6-11-2007
A	----	ORIGINAL RELEASE, CATEGORY 1 DEVICES TO BE SELF-CERTIFIED FOR MHS USAGE	3-20-2003

MATERIAL	COLOR AND FINISH	REVISION	DESCRIPTION
TUBE - POLYETHYLENE	TUBE - ORANGE		THIRD ANGLE PROJECTION
REFLECTOR - ACRYLIC	REFLECTOR - SAE AMBER		TOLERANCES UNLESS OTHERWISE SPECIFIED
REMAINDER - PROPRIETARY	BANDS - WHITE HI INTENSITY		2 PLACE DECIMALS ±
			3 PLACE DECIMALS ±
			ANGULAR DIMENSIONS ±

THIS DRAWING IN DESIGN AND DETAIL IS EXCLUSIVELY FOR STOP-PAINTING.COM
NO PARTS OR MATERIALS ARE TO BE COPIED, REPRODUCED, OR USED FOR
MANUFACTURING OR ANY OTHER PURPOSE WITHOUT CONSENT. ALL DESIGN AND INVENTION RIGHTS RESERVED.